



SONOMA  
COUNTY  
MUSEUM

# MUSE

CONNECTING SONOMA COUNTY'S RICH HISTORY WITH CONTEMPORARY ART & CULTURE

SPRING/SUMMER 2008 • VOLUME 22 • NO. 2  
WWW.SONOMACOUNTYMUSEUM.ORG



**3** 20th Anniversary of  
*Artistry in Wood*



**4** Ruth Asawa opening  
reception



**5** Teacher Appreciation Day  
at the Museum

## Benefit Auction Event – Saturday, April 26

### Museum celebration to feature elegant décor, stylized food & exceptional entertainment

With the goal to raise money while staging a good time and letting people “kick their heels off,” this year’s benefit auction — entitled *Unveiled: A Celebration* — will be a one-of-a-kind festive occasion. For the event, the Museum will close off 7th Street between A and B Streets in Santa Rosa to allow seating, live entertainment and a fun place for mingling, dancing and hosting the live auction.

A silent auction of donated spa weekends and getaways, cultural events and precious treasures will be available during the event for bidding. Big ticket items will be auctioned off live during the event, and entertainment will be ongoing throughout the evening (*partial list of auction items on page 4*).

#### WIN A PRIZE IN THE MUSEUM’S DRAWING!

As part of the event, the Museum is hosting its first-ever raffle drawing, with three super prizes. At exactly 8:30pm on stage during the Celebration, the Museum will pull out the raffle spinner and three tickets will be selected to win these fabulous prizes.

**Grand Prize:** Private Tour and Tasting at Lagunitas Brewing Company, including a catered lunch for 10



**2nd Prize:** Safari West family package (2 adults and 2 children) including lunch



**Christo Prize:** Round-trip airfare for two from Sonoma County to Las Vegas



**Tickets are \$10 each or 6 for \$50**

The Museum created this extra program so that everyone in the community can take part in supporting the Museum, and also have a chance to be rewarded for their support.

**You do not need to be present to win.**

For details and rules, visit [www.sonomacountymuseum.org](http://www.sonomacountymuseum.org).

Download and fax your order form to (707) 579-4849.

#### Theme

Inspired by the Museum’s *Christo & Jeanne-Claude Collection (Wrapped & Unwrapped)*, the unveiling of the Museum’s plans for the future, and the introduction of a new Executive Director, the décor will feature veiled tents as lounge areas, space heaters, light-up bars, and speakeasy-style high-boy tables.

#### Drinks & Such

The event will include 8-10 microbrewery beer stations, hosted by **Lagunitas Brewery** & friends, featuring 15 different beers from local brewers. Lagunitas is the featured sponsor for the year and will be pouring their own specialty brews at the Celebration.

Renowned winery **Kendall-Jackson** will be serving select wines from various appellations, and will unveil a special reserve appellation for the event. The event also includes a sparkling wine bar, courtesy of **Korbel** — and **Sonoma Sparklers** will serve non-alcoholic drinks such as blackberry, cherry and pear ciders.

#### Featured Foods

Revolving around the theme of *Unveiled*, and the *Wrapped/Unwrapped* Christo exhibition currently in the Museum, the featured food items will include wrapped-style foods — with a broad selection of local and artisan cheeses, tapenades, dips, fruits and vegetables. In addition, **Palette Art Café & Gallery** is planning to donate a spectacular gourmet platter of 12-layer sweet potato gratin with a chipotle sauce along with a platter of chanterelle mushroom risotto and bing cherries.

#### Entertainment

Sonoma County bluegrass band **The Pine Needles** will play acoustic originals, jazz, Americana, and popular music for the crowd, starting at 5pm until 7pm. After the silent and live auctions have closed, the **Sonoma County Fire Dance Collective** will perform, which will be followed by **DJ Gabe Meline** spinning selected oldies and dance tunes. Meline is a local musician, historian and record collector; he’s also a staff writer for **The Bohemian**.

To donate items, reserve tickets, or for more information, contact the Sonoma County Museum at (707) 579-1500 x13. Or you can get event, raffle and drink tickets via an online form on the website, [www.sonomacountymuseum.org](http://www.sonomacountymuseum.org). See you there!

#### EVENT SUMMARY

**Unveiled: A Celebration – the Museum’s Annual Benefit Auction**

**DATE:** Saturday, April 26, 2008

**TIME:** 5–10pm

**COST:** \$85 per ticket or \$150 for two, in advance before April 18 \$105 each, after April 18 or at the door

**Drink ticket** — \$20 includes a keepsake glass

**Table sponsorships** start at \$2,500 and up

**Raffle Drawing** — Tickets \$10 each, or 6 for \$50

**Live and Silent Auctions** — Get a preview of the exciting items to be auctioned off, page 4

## EMERGING ARTISTS PRESENTED AT SONOMA COUNTY MUSEUM

Opening Reception Saturday, May 10, 6-8pm

SonomaArts Awards for Emerging Artists celebrates its second iteration with \$5,000 cash awards honoring three emerging artists: Julie Cavaz, Sarah Frieberg, and Geirrod Van Dyke. The awards include feature exhibitions at the Sonoma County Museum, Courthouse Square and the Sonoma Valley Museum of Art, recognizing the artists for their outstanding work as well as advancing their development as artists.

With exhibitions displayed at prestigious art institutions, and nominations invited from 70 Sonoma County arts organizations, Sonoma County Artist Awards for Emerging Artists aims to increase arts awareness and to build a stronger arts sector within the community. Collaborative efforts culminate in a one-day exhibit on Saturday, May 10 in Courthouse Square, featuring artwork from all Emerging Artist applicants, with a reception

*continued on page 5*

## Zone of Focus

Opening Reception Saturday, May 10, 4-6pm

*Zone of Focus*, featured at the Museum in 2005, is an annual juried high school black and white photography exhibition. Beginning in 1999, this event has grown from a local Santa Rosa gathering to a more regional North Bay competition, attracting entries from as far away as Southern California and Florida. Approximately 500 works are submitted annually, of which 75 pieces are chosen for the exhibition. Photographs are judged in seven categories and each category has a first, second and third place. This year’s \$4,000 dollars in prizes will be awarded by the Sonoma County Museum’s Chief Curator Patricia Watts, along with local photographer Sarah Pedlow, and photography collector Craig Rosser.

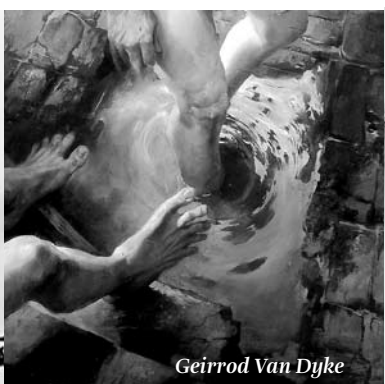
Tanya Braunstein, Artistic Director for the competition and head of the Santa Rosa High School photo program states, “*Zone of Focus* gives students a chance to present their work in a professional environment and to have a reception in their honor. It provides the public the opportunity to see the range and maturity of the students’ work.” Sponsored in part by the Friends of ArtQuest, *Zone of Focus* is a unique occasion to see through the eyes of our local youth.



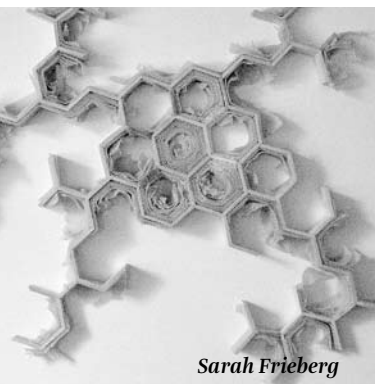
Poster Award Winner Claire Sloan



Julie Cavaz



Geirrod Van Dyke



Sarah Frieberg





# SONOMA COUNTY MUSEUM

## MUSEUM STAFF

Interim Executive Director **Justin Higgs**  
 Director of Development **Maria Sundeen**  
 Chief Curator **Patricia Watts**  
 Exhibitions Manager and Historical Collections Curator **Eric Stanley**  
 Museum Coordinator **Sarah-Jane Andrew**  
 Educator Coordinator **Monica Burrowes**  
 Visitor Services and Volunteer Coordinator **Susan Eschler**  
 Business Manager **Kirsten Olney**

## BOARD OF TRUSTEES

President **Jim Passage**  
 Vice Presidents **Hugh Futrell**  
**Joann Mitchell**  
 Secretary **Liz Uribe**  
 Treasurer **Judith Glenn**

Lindsay Austin Cathy Kaufman  
 Henry Beaumont Ray Leonard  
 Kathleen Ferrington Juan Nieto  
 Theresa Rodriguez Fritz Marilyn O'Heir  
 Anthony Hoskins Marc Richardson  
 David Katz Craig Roland

## TRUSTEES EMERITUS

Marlene Ballaine Wally Lowry  
 Nancy Berto Temple Smith  
 Harry Lapham Ed Von der Porten

## MISSION

The Sonoma County Museum celebrates and interprets the region's rich history, art, and culture by exhibiting and collecting relevant objects and artworks, by serving as a vital community gathering place, and by inspiring visitors with dynamic experiences that engage, educate, and enlighten.

## VISION

The Sonoma County Museum will advance the appreciation of history, art and culture in the region by inviting a dialogue among artists, scholars, and diverse community members. We will link the natural environment with human activities to provide a sense of place. We will be a leader in presenting the integration of history with contemporary art, each deeply reflective of culture in Sonoma County.

## THEME

The Sonoma County Museum is home to the largest collection of preparatory works in the nation by renowned environmental artists Christo and Jeanne-Claude. It was thirty years ago that the husband and wife team executed Running Fence, a twenty-four mile long fabric fence sited along the rolling hillsides of West Sonoma County for a two-week period. This epic work that consisted of forty-two months of collaborative efforts, has provided a rich artistic and cultural legacy amidst a region of cattle ranchers who are increasingly converting grazing lands to grapes for economic gain. Thus the links between land and culture in Sonoma County are unique and inform the Museum's programmatic focus of "Where Land Meets Art."

## MUSEUM HOURS

Wednesday through Sunday, 11am to 5pm  
**Admission:** \$5 general  
 \$2 students, seniors and disabled  
 Free to SCM members and children under 12.

The Muse is published by the Sonoma County Museum, operated by the Historical Foundation of Sonoma County, a non-profit, member-supported corporation founded in 1976.

425 7th Street, Santa Rosa, CA 95401  
 ph (707) 579-1500 fax (707) 579-4849  
 Email: info@sonomacountymuseum.org  
 Web: www.sonomacountymuseum.org

MUSE Design: Nelson Design

## Dear Members and Friends:

This issue of our MUSE is dedicated to all the generous supporters of the Museum. We've had to expand the size of this issue to fit in all our thanks, especially to all the generous supporters of our Annual Fund (page 5). Thank you to all those who came to our Annual Luncheon and honored the Press Democrat in their 150th year (see below). Thank you to all the supporters and sponsors of our upcoming Celebration (page 1). And finally, thank you to all the partners, sponsors and artists who have contributed to our current and upcoming exhibitions and programming (page 3).

Spring is definitely in the air and the warmer weather always invigorates and brings a new perspective to our daily lives. Spring is a time of change and, for the Museum, this spring is full of exciting changes.

We will be changing exhibits on the Main Level when we replace the very successful *Following Nature* and *ECOCENTRIC* shows. Opening May 10, 2008, two new exhibits will be showcasing the excellent works of young, up-and-coming, Sonoma County artists — *Sonoma County Emerging Artists* (in collaboration with Sonoma County Arts Council and Community Foundation Sonoma County) and *Zone of Focus*, a juried exhibition of photography by regional high school students.

*Tengo La Voz*, our two-year initiative partnering with the Sonoma County Library and KRCB, is really building momentum. This program gives local Latino youth an opportunity to find, explore and express their artistic voice, and Museum workshops throughout the spring and summer will culminate in an exciting exhibition and special programming in the fall.

Most importantly, we invite you to join us as we continue to ENGAGE and INFORM all members of the community and as we celebrate Art, History and Community at our Annual Benefit Auction, *Unveiled: A Celebration* Saturday, April 26. There, we will also be announcing our new Executive Director and unveiling our new prospective expansion plans. But you have to be there to see it...

This year's event is shaping up to be a fantastic evening and I look forward to seeing you all there.

Sincerely,

Justin Higgs  
Interim Executive Director



## New Education Coordinator combines background in museums, education and history

With the departure of full-time Education Coordinator Maureen Cecil last September, and the relocation of her temporary replacement Carrie Minikel, the Museum is excited to announce the hiring of a new Education Coordinator, Monica Burrowes.

Ms. Burrowes comes to the Museum with a background in education and both Historical and Natural History museums. She has worked as a play and music teacher for young children, has developed classroom lesson plans, and has developed and presented educational materials for the arts in a variety of settings.

Ms. Burrowes established the volunteer program at the Leland Stanford Mansion State Historic Park and developed training, educational and interpretive materials for staff, volunteers and the general public.

Her museum experience extends to exhibit design, research, volunteer and docent training, and historical archiving, and includes work for the Santa Barbara Museum of Natural History, the South Coast Railroad Museum Goleta Depot, and the Santa Barbara Trust for Historic Preservation. Ms. Burrowes also interned as an archivist at the Department of Special Collections at California State University Sacramento and is the co-founder of the Destination Theatre Company.

Ms. Burrowes has a BA in History from UC Santa Barbara and has completed coursework for a Master's degree in Public History from CSU Sacramento.

We are fortunate to have found someone with such a broad background in all of our activities, and look forward to making our *Museum & Schools* program stronger than ever. Feel free to stop by and introduce yourself to her next time you're in the Museum!



New Education Coordinator  
Monica Burrowes



The 2008 Annual Luncheon on Sunday, January 13, was held at the Fountain Grove Golf & Athletic Club. Held this year honoring the Press Democrat's 150th anniversary with the 2007 Cultural Achievement Award, more than 200 people attended this fabulous luncheon party.

*Pictured above, clockwise from top left: (l-r) Pete Golis, Gordon Amrein, Gaye LeBaron, and Mr. & Mrs. Bruce Kyse; Long-time Museum supporters Dale and Susan Schmid; Jeremy Nichols and William Roop; Maria Sundeen, Donna Zapata and Elizabeth Jovel; and Jill & Pete Golis and Dan Lanahan*



# SPRING/SUMMER

## PROGRAMS

Space is limited for all Museum programs, so please RSVP early by calling 579-1500 x. 13 or by emailing [rsvp@sonomacountymuseum.org](mailto:rsvp@sonomacountymuseum.org).

**SAT, APRIL 19 Lecture on Ruth Asawa** 2pm  
Emily Doman, Education Manager for the deYoung Museum will give an informative lecture on the artist's life and work. Tickets: \$7.50 general, \$5 students/seniors, members.

**WED, APRIL 23 Mark Wilson: Architect Julia Morgan** 7-9pm  
**HISTORICAL SPEAKERS SERIES** — Architectural historian Mark Wilson will speak on Julia Morgan's unique place in American architecture with special emphasis on her Sonoma County designs. Wilson is the author of *Julia Morgan: Architect of Beauty*, published in 2007. Tickets: \$7.50 general, \$5 students/seniors, \$3 members.

**THU, MAY 1 Mark Jensen of Jensen & Macy Architects** 6:30-8:30pm  
**NorthXNorthCoast SPRING LECTURE SERIES** — Jensen & Macy Architects is an award-winning architecture and interiors firm based in San Francisco. The practice currently has projects across the United States and Europe. \$10 per person (Main Gallery).

**SAT, MAY 24 Bookmaking Workshop** 12-4pm  
Learn how to make scrapbooks, photo albums, blank books and journals. All materials provided. Cost \$20/\$15 members.

**WED, JUNE 18 Panel discussion with Sonoma County Emerging Artist Award winners and Jurors** 6:30pm  
Meet the artists and jurors and learn about what inspires their art, and how and why the artists were chosen.

**LAST WEEK OF JULY 3 Day Digital Sculpture-CAD Workshop with Robert Michael Smith**  
Sponsored by Autodesk.

**SAT, AUG 16 Birdhouse Building Workshop, Free Family Day** 1-4pm  
This popular Family Day is hosted by the Sonoma County Woodworkers Association. Includes craft and artisan wood demonstrations and birdhouse building for families.

## EVENTS

**SAT, APRIL 19 Auxiliary Spring Tea** 11am-3pm  
\$10 donation. Location will be disclosed when you RSVP to Charlotte Martin, PO Box 796 Kenwood, CA 95452, or call 707.833.6628.

**SAT, APRIL 26 Unveiled: A Celebration** 5-10pm  
Annual Benefit Auction. \$85/ticket or \$150/couple, before April 19. \$20 drink ticket, includes unlimited drinks and a keepsake glass. Go to [www.sonomacountymuseum.org](http://www.sonomacountymuseum.org) to download a ticket order form, or call 707.579.1500 x.13 to RSVP today.

**FIRST FRIDAYS May - October**  
Open the first Friday of every month, 5-8pm — featuring poetry, music, dance performances, etc. Sponsored by the Santa Rosa Arts District.

**FRI, MAY 2 ecoPerformance by Praba Pilar** 7:30pm  
Addressing the deployment of biotechnology as the earth's savior, award-winning Colombian performance artist Praba Pilar and her fictive Church of Nano Bio Info Cogno reveal mankind's desire to control nature.

**SAT, JUNE 21 Artist "Solstice" Night** 6-9pm  
A night of live music, champagne and desserts, to meet and greet local Emerging Artists.

## EXHIBITIONS

MAY 10 - JUNE 29, 2008

*In the Main Gallery*

### Sonoma County Emerging Artist AWARD

This annual award presented by the Arts Council of Sonoma County, is designed to encourage emerging artists in the development of their work. In addition to \$5,000 in prize money, the winners will present recent work at the Museum for the first time.

*In the Contemporary Project Space*

### Zone of Focus

This juried exhibition of black and white photography taken by high school students is in its ninth year. Works include both digital and analog formats. Winners receive cash awards and prizes.

JULY 12 - AUGUST 31, 2008

*In the Main Gallery*

### Artistry in Wood 20th Anniversary

This major showcase of fine regional woodworking, now in its twentieth year, celebrates the county's exceptional legacy of arts and crafts, including traditional and contemporary styles.

*In the Contemporary Project Space*

### Robert Michael Smith: Digital Sculpture

Using technology to create and form digital sculptures, both virtual and actual, Smith's work re-creates and re-forms basic structures of nature — building alien abstract worlds intended to access the landscape of the imagination.



Robert Michael Smith's Paradise Bird Burlesque

## Robert Michael Smith

**Contemporary Project Space**  
July 12 - August 31, 2008

Digital sculpture is a rare and unique medium in the art world. It is an art form that allows an artist to combine reality with fantasy on a more exact scale, giving it an eerie sense of nature gone awry. This summer during the annual Artistry in Wood exhibition, the Museum will feature in the Contemporary Project Space a native Santa Rosa artist who returns to the County after several years exhibiting as an internationally recognized sculptor. Robert Michael Smith has displayed his creations in Dubai, China, England, Turkey, New Zealand, and France. His mother, Virginia Smith, Museum Auxiliary member and fan of her son's work, is thrilled to share his successes with their hometown.

Robert Michael Smith is Professor of Art and Technology at the New York Institute of Technology in New York City and has given lectures around the world on digital sculpture.

This exhibition will consist of approximately 20 pieces selected from Smith's current work, including small sculptures, rapid prototype pieces, wood models created in China, and some pieces digitally carved from stone. The show will also include prototype models carved in granite from Smith's show in China, featured during the Olympic Games in Beijing.

This contemporary exhibition and related programming is sponsored by many former members of the Museum of Contemporary Art (MOCA), formerly affiliated with the Wells Fargo Center for the Arts. Their support has made this program possible.

The Museum is planning a digital sculpture/CAD workshop in conjunction with this exhibition this summer in collaboration with AutoDesk. For more information call 707.559.1500 ext. 16.

### Anniversary Exhibition

## 20th Annual Artistry in Wood

Opening Reception, Saturday July 12, 4-6 p.m.

**Main Gallery**  
July 12 - August 31, 2008

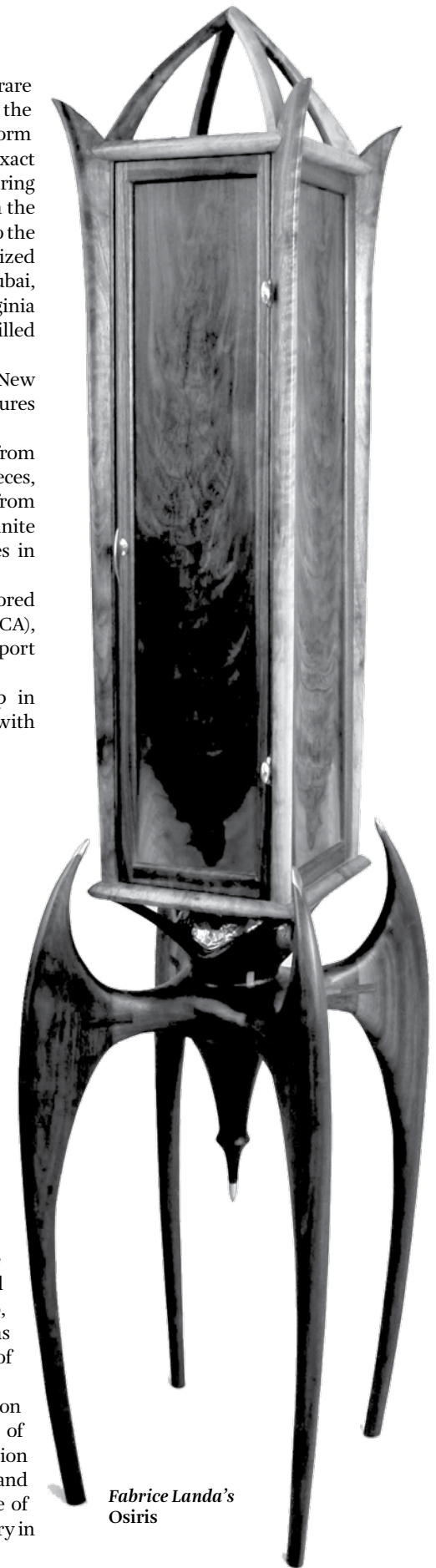
For twenty years the Sonoma County Museum and the Sonoma County Woodworkers Association have collaborated to present Artistry in Wood, a major showcase of fine regional craftsmanship. The exhibition reflects Sonoma County's legacy of arts and crafts, as well as the local resonance of wood and the landscape.

Over the years, Artistry in Wood has evolved from a simple exhibition of a local crafts association, into something greater. While firmly grounded in Sonoma County, Artistry in Wood has developed a broader, regional reputation drawing participants from Sacramento, San Diego, Mendocino County and other areas of California. It has become one of the largest and most respected annual exhibitions of woodwork in the state.

The content of Artistry in Wood has matured over time, taking on greater depth and diversity. The exhibition highlights a spectrum of creative talent, from the traditional woodworker who strives for precision and balanced design, embodied in the classic forms of furniture and familiar objects, to the artist who pushes the boundaries in the use of wood as a medium. Both are equally remarkable and have made Artistry in Wood a highlight of the exhibition calendar for 20 years.

Throughout its history, *Artistry in Wood* has been a juried exhibition in which one entry is singled out for the highest honor. As a special addition for the 20th Anniversary, the exhibition will highlight past "Best of Show" award winners.

Judges for the 20th Anniversary are Sandor Nagyszalanczy, wood craftsman/designer, author and instructor from Santa Cruz; Julian Shaw woodturner and instructor from Sebastopol; and Ejler Hjorth-Westh furniture designer/craftsman and instructor at College of the Redwoods in Fort Bragg.



Fabrice Landa's Osiris



Michael Cullen's Summer Harvest



# Unveiled: A Celebration AUCTION

## Live Auction

### Artists & Treasures

**Signed, framed photographic artwork by musician Tom Waits**  
Urban landscape, black and white photograph 5" x 7" unframed, 12" x 15" framed. This is a collectible photograph and extremely rare. Valued at \$1,700.

**Contemporary art mirror panel by artist Ned Kahn**  
Aluminum discs hinged on board with small nails – "Untitled" from his "Digitized Fields" series, the work is 36" x 13". Kahn is a MacArthur Award Winner, and an internationally renowned award-winning artist whose work animates natural phenomena. Valued at \$1,500.

**Julio Cesar Morales, visual contemporary art**  
San Francisco artist **Julio Cesar Morales**, and lead artist for the Museum's *Tengo La Voz* project, will donate a black and white vinyl print with idiosyncratic symbols that express his bi-cultural identity, fusing elements of traditional Mexican culture with contemporary art. This work from his "street vendors" series is valued at \$2,500. Morales is an internationally recognized artist who participated in last year's Istanbul Biennial.

**Oil painting by celebrated West County artist Adam Wolpert**  
Landscape painting, oil on board, 10" x 15". Valued at \$1,500.

**Antique jewelry from Old Towne Jewelers**  
A rare and distinctive piece, from the firm that specializes in rare estate jewelry and fine and costume vintage pieces. Valued at \$1,000.

**A Year of Desserts**  
A new dessert, cake or pastry a month courtesy of Michelle Marie's Patisserie, starting May 2008. Valued at \$400.

**Oliver Ranch Private Tour**  
Private Tour of Oliver Ranch for 10. This hard-to-get tour is scheduled for the Fall 2009 Tour Season. Valued at \$3,000.

**PLUS, spray-painted graffiti art wall from local artist Chris Jehly**  
The Petaluma artist will donate two large wall panels, 8'x3', each spray-painted with colorful biomorphic imagery in the style of graffiti art. Valued at \$1,500 each per panel, minimum bid \$500. Chris will be painting and finalizing his wall painting during the event, so make your bids as you watch the creation come alive.

## Silent Auction

SELECT LIST OF ITEMS

### Hotel + Dining

**Gaige House Inn, Glen Ellen**  
One-night stay in a deluxe room including a wine & appetizer reception

**Hotel La Rose & Joseph's Restaurant and Bar**  
One-night stay in a suite, including a European Style Breakfast, plus a 3-course lunch for two at Joseph's

**The Lodge at Sonoma, a Renaissance Resort and Spa**  
One-night stay in a deluxe room with complimentary use of fitness center and swimming pool

## Activities + Events

**Disneyland, Anaheim**  
Two 1-day passes to Disneyland® Park or Disney's California Adventure® Park

**Galleria Park Hotel, SF and SF Giants Tickets**  
Two tickets to a San Francisco Giants game at the concierge level, including a one-night stay at the luxurious Galleria Park Hotel

**Leadership Santa Rosa's 2nd Annual Windsor Golf Tournament**  
Enjoy golf for two including cart, lunch, beer, wine and other goodies at the 2nd Annual Windsor Golf Tournament on May 21

**Sonoma County Roller Derby**  
Live fast with a premium gift basket of Roller Derby girls swag plus tickets for a family of four to Cal Skate

## Spa & Pampering

**Biquor & Biquor of Beverly Hills, Montgomery Village, Santa Rosa**  
Haircut and basket of luxury haircare products by Kerastase

**Elle Lui Salon, Santa Rosa**  
Haircolor Service & Haircut at one of the finest salons in Sonoma County

## Tours & Tastings

**Kings Hill Cellars**  
The Ultimate Wine Country Experience: Winemaking Membership for a barrel of wine which yields 6 cases of premium wine

**Schug Carneros Estate**  
Private tour and tasting for 12, includes gourmet cheeses and four bottles of 2005 Pinot Noir

**Instant Wine Cellar from Lowry's Collection**  
Enjoy 12 bottles of luxury premium wine courtesy of Wally Lowry's private home cellar

**Valley of the Moon Tour and Tasting plus Limo Service**  
Private tour and tasting for four, plus two bottles of premium wine of choice. Includes a \$100 limousine gift certificate courtesy of Beau Wine Tours limousine service

**Russian River Wine Road Premium Package**  
Two tickets to "A Wine & Food Affair," two tickets to "Winter Wineland," six tickets to "Barrel Tasting" and a copy of *Tasting Along the Road* cookbook

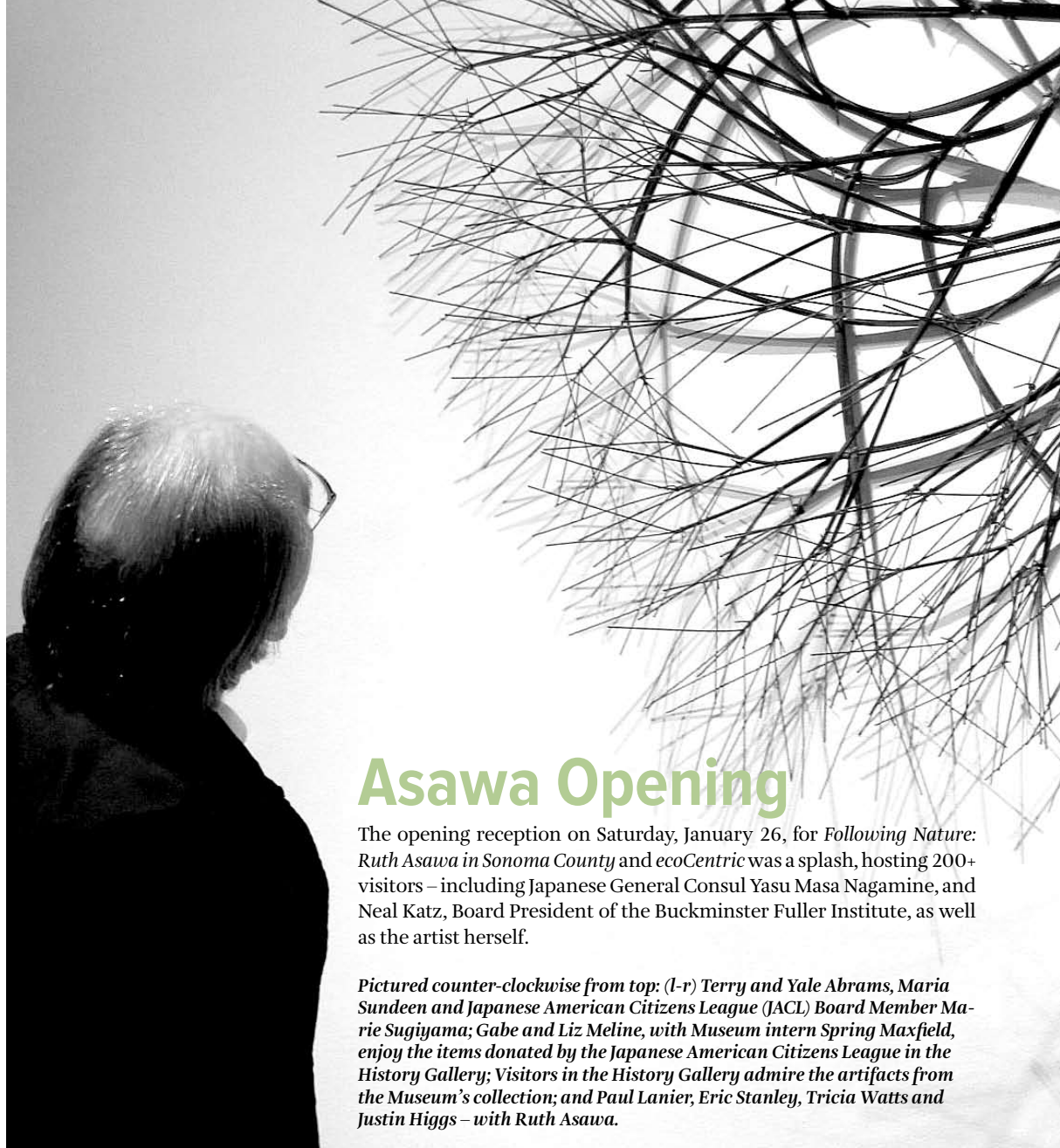
## Artwork

**George Rose, photography**  
From the Pulitzer Prize-winning photographer we have two framed, signed prints from *The Art of Terroir* exhibition, a signed copy of *The Art of Terroir* poster, and a signed copy of *The Art of Terroir* photography book.

**Rob Keller, mixed media**  
Napa artist Rob Keller, who recently installed a live observation hive in the Contemporary Project Space last fall, will donate a work from his installation addressing bee populations including a jar of sweet nectar.

**Collage mixed media from noted local artist Mario Uribe**  
Detailed work, exclusively framed. Valued at \$2,400.

**PLUS MANY MORE CULTURAL OUTINGS, TREASURES & WINE COUNTRY PACKAGES!**



## Asawa Opening

The opening reception on Saturday, January 26, for *Following Nature: Ruth Asawa in Sonoma County* and *ecoCentric* was a splash, hosting 200+ visitors – including Japanese General Consul Yasu Masa Nagamine, and Neal Katz, Board President of the Buckminster Fuller Institute, as well as the artist herself.

*Pictured counter-clockwise from top: (l-r) Terry and Yale Abrams, Maria Sundeen and Japanese American Citizens League (JACL) Board Member Marie Sugiyama; Gabe and Liz Meline, with Museum intern Spring Maxfield, enjoy the items donated by the Japanese American Citizens League in the History Gallery; Visitors in the History Gallery admire the artifacts from the Museum's collection; and Paul Lanier, Eric Stanley, Tricia Watts and Justin Higgs – with Ruth Asawa.*



60 fortunate guests attended the sold out wire workshops, held by Ruth Asawa's daughter Aiko. Pictured left, Aiko Asawa shows workshop guests how to craft wire art in the style of her mother. Pictured below, Phyllis Beals, Carol Vena-Mondt and Ann Hines enjoying their crafty afternoon.





# Annual Fund Drive 2007

## Total \$74,987

Thanks to a generous challenge grant of \$20,000 from Jean Schulz through the Schulz Donor-Advised Fund of the Community Foundation Sonoma County, the Museum was able to leverage the challenge and once again, exceed its goals. Thank you everyone who participated!! Every dollar makes a difference.

### \$5,000 & up

American Ag Credit  
Jean Schulz

### \$2,500 – \$4,999

Lindsay & Kirsten Austin  
Barbara & Richard Ferrington  
Bill & Birte Knight  
Joann & James Mitchell  
Jim & Celine Passage  
Craig & Edie Roland  
Wright Contracting

### \$1,000 – \$2,499

Ed & Jeanne Anderson  
Bill Carle  
Lorna Drake  
Charles & Deborah Eid  
Hugh Futrell  
Judith & Tom Glenn  
Frank Gobar  
Cathy & David Kaufman  
Jim Kidder  
Josephine Nattkemper  
Michael Randolph & Judith Redding  
Sonoma County Museum Auxiliary  
Shirley Spencer  
Henry Trione  
Richard Wallrich  
Colleen Williams

### \$500 – \$999

Marjorie Barnebey  
Cynthia Daniel & Doug Lipton  
Robert E. Hunter  
Dale & Susan Schmid  
The Swig Foundation  
John Weinstein & Heidi Stewart

### \$250 – \$499

Stan & Claire Borges  
Robin Draper & Mike David  
Betty Freeman  
Joan R. Osborne  
C. William & Mary-Louise Reinking  
Dee and Harry Richardson  
R. Dee & La Prael Robbins  
Barry & Audrey Sterling  
Mark Swedlund & Deborah Dobish  
Ransom B. & Marilyn Turner  
Alice & Judge Lloyd Von Der Mehden

### \$100 – \$249

Terry & Yale Abrams  
Robert & Kim Agrella  
Gordon & Carol Amrein  
Paul & Judy Archambeau  
Bruce Aspinall  
Marlene Ballaine  
Ann Baumann  
Barry & Gail Ben-Zion  
Nancy & David Berto  
Barbara Biebush  
George & Caroline Cinquini  
William Crowley  
Carol Cuzner  
Noelle & Chet Dangremond  
Richard A. & Carol Dean  
Kristin E. Dick  
Joan Dinner & Michael H. Smith  
Paul & Hallie Downey  
Steve & Patricia Edelstein  
Sheila Einhorn  
Julius Faoro  
Anne Fitzgerald & Brian Lloyd  
Michael & Sharon Franchetti  
Friedman Family Trust  
Gallo of Sonoma County  
William Geary  
Susan & Joseph Gorin  
Mary Hallock  
Vonna Holz  
Linda Illsley  
Donald & Barbara Jackson  
Eugene & Betty Jemal  
Harold & Jean Jensen  
Keegan & Coppin  
Carl & Evelyn Lawson

John & Gaye LeBaron  
Don and Carol Ling  
Dorothea Lyman  
George & Nonna Merrill  
Joseph Michalek  
Syd & Judy Miller  
Nadenia Newkirk  
David Noorthoek  
John & Kirsten Olney  
Paul Paddock & Charles Stewart  
Michael Panas  
Kalvin & Janne Platt  
Redwood Hotels Corporation  
Rachel & Robert Sinai  
Mervyn & Marian Singer  
Temple & June Smith  
Lorri Tatton  
Eveyn Truman  
Edward Von der Porten  
Nelson & Jane Weller  
Glen & Nancy Yamamoto  
Gordon & Laura Zlot

### Up to \$99

Dwight & Kathy Allen  
Harry Bacas  
Bottle Barn  
Genevieve Barnhart  
Reginald & Margaret Bayley  
Wayne Bonkosky  
Helen E. Brittan  
Herb & Ellen Brosbe  
Rayna & Fred Bunker  
Jane Carpenter  
Chandra Cerrito  
Jane W. Ernsberger  
Russ & Judy Dieter  
Harold & Claire Hill  
Ann & Don Hines  
Ron & Marcia Johns  
Kathy Juarez  
Robert & Margaret Lawson  
Ardath Lee  
Anne & Richard Lewis  
David V. Lightfoot  
Helen & Paul McKairnes  
Edward & Carol Margason  
Jean O'Donnell  
Doris Peterson  
Frank & Jonnee Podesta  
Steven Purcell & Collette R. Michaud  
Chuck & Katie Quibell  
Shirley & Vern Rose  
Jayne Rosenberg  
Helen Rudee  
Joseph & June Schwartz  
Beverly Singer  
Howard & Norma Stoddard  
Francisco Vazquez  
Art & Teresa Volkerts  
Jerry & Karen Wagner  
Loretta Zweig  
Alan Soule  
Mary Tanner  
Robert Tuttle  
Richard & Donna Wallrich  
Marjorie Wilson

### New Members

January 1 – March 31

Jennifer Adams  
Susan Chunco  
Duchamp Winery  
Pat Edelstein  
John & Janet Grant  
Phillip Gordon  
Nancy & Scott Hann  
Catherine Hickey  
Anthony Hoskins  
Gene & Jodi Hottel  
Paula Kovars  
Robert & Margaret Larsen  
Cassandra B. Lista  
Penelope Narayan  
Alan Nicholson  
Lynn Reiter Valentine

## EMERGING ARTISTS continued from page 1



to follow at the Sonoma County Museum to celebrate the Sonoma County Artist Awards – Emerging Artist Winners Exhibit.

Cavaz, Frieberg, and Van Dyke were selected from 57 applicants who were among 98 artists eligible for the award in a blind jury process first selected by a committee of arts professionals, then unanimously chosen by three esteemed Bay Area visual arts experts: Scott Shields, Chief Curator, Crocker Art Museum; Allison Gass, Assistant Curator, Paintings & Sculpture, San Francisco Museum of Modern Art; and Carrie Lederer, Curator of Exhibitions & Programs, Bedford Gallery

The 2008 awards are managed by the Arts Council of Sonoma County and funded by Community Foundation Sonoma County (CFSC). CFSC is currently building support for an Emerging Artists Endowment, which will provide sustainable funding for these awards in the future.



## GALLERY TALKS

Visitors get in-depth during the Museum's Gallery Talks & Tours

*Pictured above, Lewis de Soto (far right), Obsession exhibition designer and artist, on Saturday, January 5, as he guides visitors through the Main Gallery.*

*At right, Paul Lanier engages guests with a discussion about his mother's artworks during his Gallery Talk & Tour, held Saturday, February 9.*



## Thank you for your generous donations

- Henry's Flowers** — Donated a beautiful arrangement for the Teacher Open House on February 5
- Osmosis Spa** — Donated an enzyme bath treatment to the teacher open house valued at \$80
- Friedman's Home Improvement** — Donated copper wire for our kids wire art workshop, Free Family Day February 2
- Platt Electric Supply** — Donated copper wire for our kids wire art workshop, Free Family Day February 2
- Brian Ford of Metropolis Design** — Donated paper for general use at our Free Family Days
- Richard Mazza** — Donated a wooden bookshelf for our educational materials.
- The Woodworker's Association** — Designed and built benches for the CPS gallery.



Door Prize winner Elizabeth Evans from the Santa Rosa Arts Charter School

## Teacher Open House at the Museum

February 5, 2008

It was fun and frills at this year's teacher open house, which also included representatives from the Charles M. Schulz Museum, Luther Burbank Home and Gardens, Pacific Coast Air Museum and the Sonoma County Japanese American Citizens League. Educators were treated to champagne & chocolates and door prizes while learning about Sonoma County's cultural programming. Prizes included goodie bags for all teachers who attended; flowers from Henry's Flowers on Mendocino; a magnum of Dry Creek Valley Old Vine Zinfandel; and an enzyme bath from Osmosis Spa in Occidental! Fifty-five teachers attended this successful event, including SCOE superintendent Carl Wong.

Planning is under way for the next teacher's open house at the Schulz Museum in August.





## Recent Donation

# Clarence "Red" Tauzer

Recently, the Museum received a photo portrait as a gift to its permanent collection that fills an important gap. The Museum holds thousands of photos of Sonoma County subjects — people, places, events — and it was a great surprise to find that nowhere in the collection, until now, was there an image of this individual. The portrait is of Clarence J. "Red" Tauzer, a local lawyer and eventual state senator who had a remarkable impact on the development of Santa Rosa Junior College (SRJC) and the community.

Raised in Willits, California, Tauzer went to Stanford Law School and served in the military during World War I before settling in Santa Rosa in 1923 to practice law at a local firm. Formerly captain of his college basketball team, Tauzer was asked to take on the role of volunteer coach for SRJC's nascent football and basketball programs. The college had only been around since 1918, when it had an original enrollment of a mere 19 students. At the time of Tauzer's arrival, the student body was still less than 200. Tauzer became known for his intense dedication to the college and the athletic program. Despite the challenges facing a small new school, Tauzer led his SRJC Bear Cubs to a number of impressive triumphs, including a football victory over much larger San Jose State Teachers College in 1926.

After relinquishing his coaching position in 1930 to the SRJC's first professional coach, Tauzer continued to be a major booster for the college. He also became involved in a number of civic organizations, including founding the Santa Rosa Kiwanis Club. In 1947 Tauzer was elected to represent Sonoma County in the State Senate.

Thanks to George Ogden of Bakersfield, whose parents were friends of Red Tauzer, for donating the photograph. It is a special and important addition to the Museum's collection.

*Despite the challenges facing a small new school, Tauzer led his SRJC Bear Cubs to a number of impressive triumphs, including a football victory over much larger San Jose State Teachers College in 1926.*

# MUSE

CONNECTING SONOMA COUNTY'S RICH HISTORY WITH CONTEMPORARY ART & CULTURE

SPRING/SUMMER 2008  
VOLUME 22 • NO. 2

## GREAT NEW BENEFITS FOR SUPPORTING MEMBERS AND ABOVE

*Plus, ways to join and donate*

The Museum is really moving to not only make our programs more exciting and fun, we've also been trying to find new ways to give more to our members.

### Get into 200+ museums for FREE

As mentioned in the last edition of The Muse, we are now joined with the North American Reciprocal Museum (NARM) Program. This means that Supporting Members and above receive free entry into more than 200 museums throughout North America who are also members of the program. Just show the special sticker on your membership cards and any partner museum will let you in for free. For this amazing benefit, membership at this level is just \$125. If you are at the Supporting Member level or higher, stop on by so we can get you your stickers right away. Or to upgrade and check out the Museum partner list online — go to [www.sonomacountymuseum.org](http://www.sonomacountymuseum.org). Click on JOIN.

### Donate online...give a memorial gift

Our new updated website allows our donors and members easier ways to pay. Anyone can now just go to the website — [www.sonomacountymuseum.org](http://www.sonomacountymuseum.org) — and make a donation to the Museum. It's fast and easy. We've also created opportunities for you to honor a family member or friend by creating memorial and tribute donation categories.

Make your online donation to honor the memory of a loved one, friend, or colleague with a gift of support for the arts. Or provide a very special honor to a living friend, relative or colleague — to celebrate a birthday or anniversary — by donating to the Sonoma County Museum.

For just \$1,000 or more, you can honor a friend or family member and have their name installed on the Museum's Donor Wall.

Go to the website — [www.sonomacountymuseum.org](http://www.sonomacountymuseum.org) — and click on DONATE. Or contact the Development Department for more information, 707-579-1500 x15.



## MUSEUM AT A GLANCE UPCOMING EVENTS & EXHIBITS

### PROGRAMS

- APR 19** Asawa Lecture, Sat 2pm
- APR 23** Speaker's Series: Mark Wilson on Architect Julia Morgan, Wed 7pm
- MAY 1** NXNC Lecture by Mark Jensen, Thu 6:30pm
- MAY 18** FREE FAMILY DAY, International Museum Day, Sun
- MAY 24** Bookmaking Workshop, Sat 12 – 4pm
- JUN 18** Sonoma County Emerging Artist Winners' Panel, Wed 6:30pm
- AUG 16** Birdhouse Building Workshop, Free Family Day, Sat 1 – 4pm

### EVENTS

- APR 19** Auxiliary Spring Tea, Sat 11am – 3pm
- APR 26** *Unveiled: A Celebration* Annual Benefit Auction, Sat 5 – 10pm
- MAY 2** FIRST FRIDAY: ecoPerformance by Praba Pilar, Fri 7:30pm
- JUN 21** Artist "Solstice" Night, Sat 6 – 9pm

### EXHIBITIONS

- WRAPPED/UNWRAPPED** • Christo Gallery
- GIRI** • History Gallery Through Aug 31
- SONOMA COUNTY EMERGING ARTIST AWARD:** Main Gallery May 10 – June 29
- ZONE OF FOCUS** • Contemporary Project Space (CPS) May 10 – June 29
- ARTISTRY IN WOOD 20TH ANNIVERSARY** • Main Gallery July 12 – Aug 31
- ROBERT MICHAEL SMITH: DIGITAL SCULPTURE** • CPS July 12 – Aug 31



### SONOMA COUNTY MUSEUM

425 Seventh Street  
Santa Rosa, CA 95401 • 707-579-1500  
Email: [info@SonomaCountyMuseum.org](mailto:info@SonomaCountyMuseum.org)  
*Open Wednesday through Sunday, 11am to 5pm*

Non-Profit  
US Postage  
**PAID**  
Santa Rosa, CA  
Permit #94